



Milton Garden Estate, London, N16

- Split Level
- Two Double Bedrooms
- Excellent Condition
- Private Balcony
- Close to Newington Green
- Light and Airy

Price £500,000



Milton Garden Estate, London, N16

DESCRIPTION

Perfectly arranged over second and third floors of a well-maintained purpose built block, this fantastic two-bedrooms split level property boasts an impressive 779 sq. ft. of internal accommodation and a private balcony.

Available to view by appointment only, the property comprises, kitchen/diner, large reception room with a private balcony, master bedroom, double guest bedroom, bathroom, additional W.C. and ample storage.

Marlowe House is located on Milton Grove, a tree lined residential street located only moments from the, many bars, restaurants and coffee houses of Stoke Newington Church Street, Newington Green and trendy Dalston, Butterfield Green and a short walk from the wide open spaces of Clissold Park.

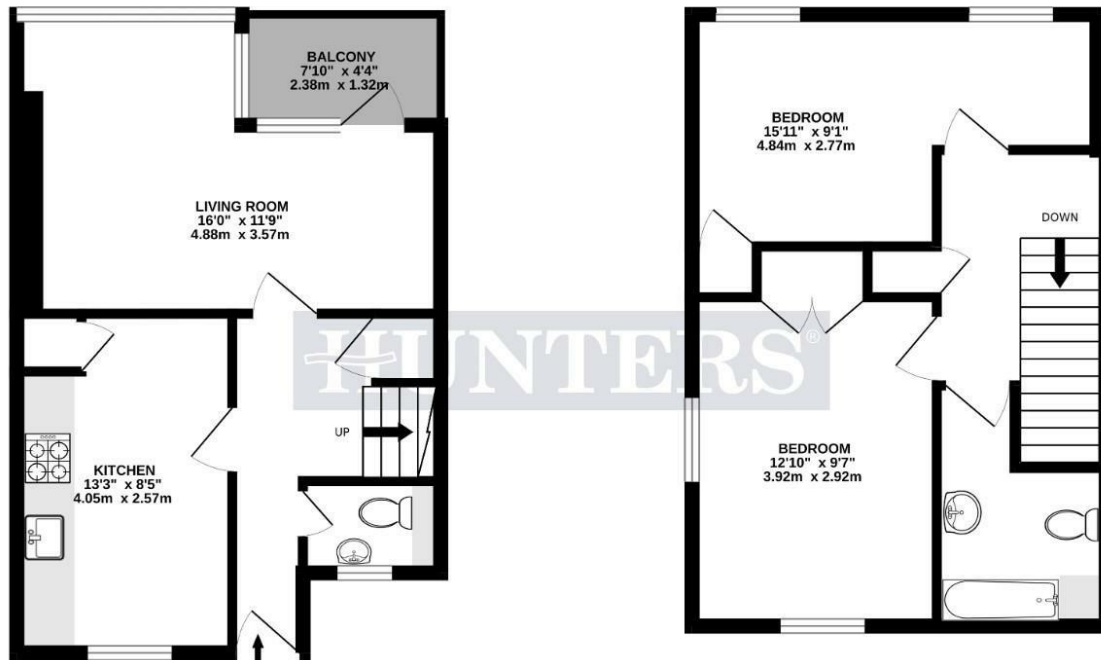
Transport links include, Canonbury Station (Overground), Dalston Kingsland & Junction Stations (Overground) and a variety of bus routes into The City and West End.





FIRST FLOOR

SECOND FLOOR



TOTAL FLOOR AREA : 779sq.ft. (72.4 sq.m.) approx.

Whilst every attempt has been made to ensure the accuracy of the floorplan contained here, measurements of doors, windows, rooms and any other items are approximate and no responsibility is taken for any error, omission or mis-statement. This plan is for illustrative purposes only and should be used as such by any prospective purchaser. The services, systems and appliances shown have not been tested and no guarantee as to their operability or efficiency can be given.
Made with Metropix ©2023



Viewings

Please contact hunters.stokenewington@hunters.com, if you wish to arrange a viewing appointment for this property or require further information.

Valuations

For a valuation of your property, please email the team with your property details, contact information and the times you are available.

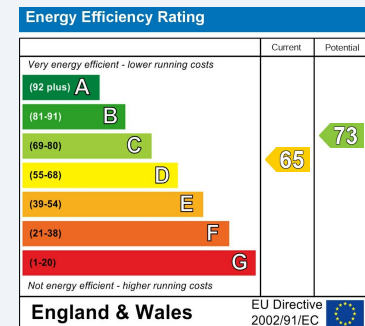


185 - 187 Church Street, Stoke Newington, London, N16 0UL

Tel: 020 7249 7499 Email: hunters.stokenewington@hunters.com <https://www.hunters.com>

ENERGY PERFORMANCE CERTIFICATE

The energy efficiency rating is a measure of the overall efficacy of a home. The higher the rating the more energy efficient the home is and the lower the fuel bills will be.



These particulars are intended to give a fair and reliable description of the property but no responsibility for any inaccuracy or error can be accepted and do not constitute an offer or contract. We have not tested any services or appliances (including central heating if fitted) referred to in these particulars and the purchasers are advised to satisfy themselves as to the working order and condition. If a property is unoccupied at any time there may be reconnection charges for any switched off/disconnected or drained services or appliances - All measurements are approximate.

THINKING OF SELLING? If you are thinking of selling your home or just curious to discover the value of your property, Hunters would be pleased to provide free, no obligation sales and marketing advice. Even if your home is outside the area covered by our local offices we can arrange a Market Appraisal through our national network of Hunters estate agents.

